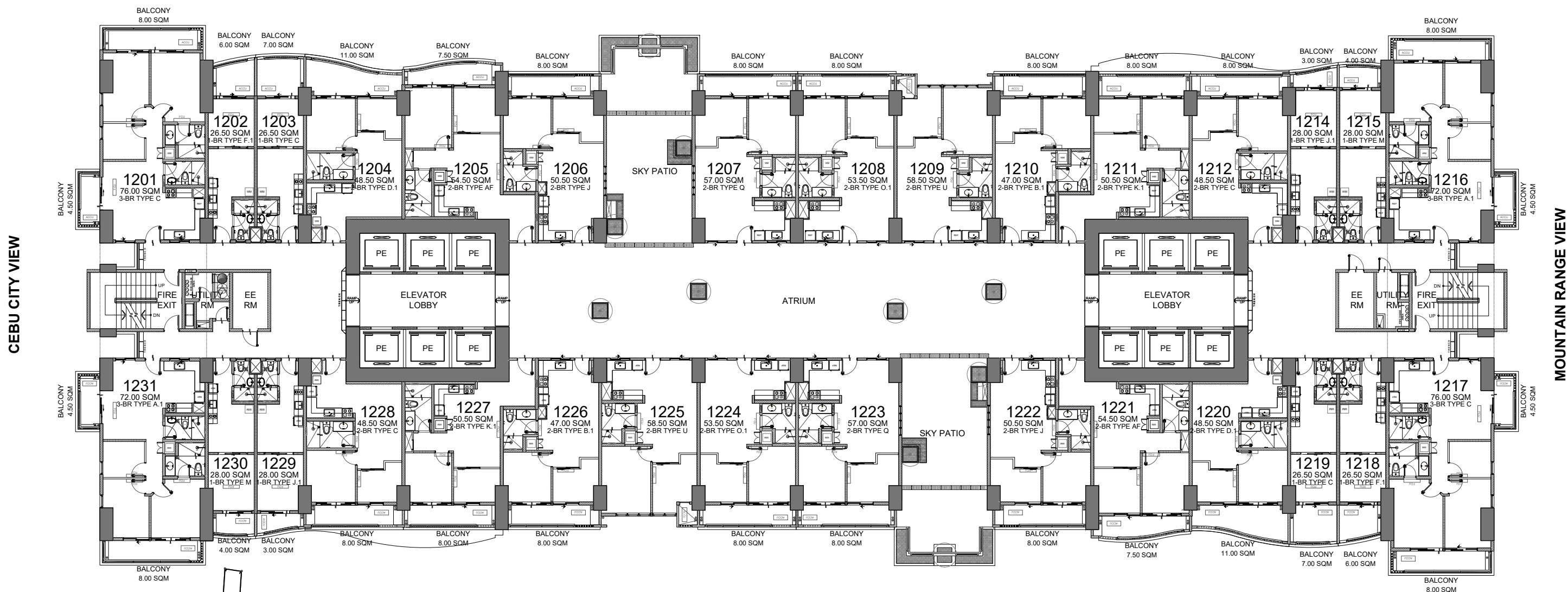


FACING AMENITIES
(MACTAN CHANNEL VIEW)

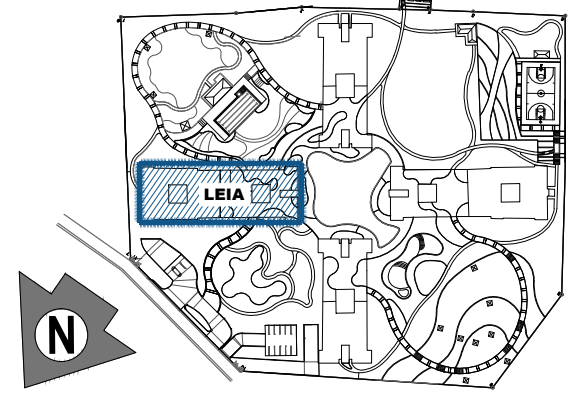


FACING AMENITIES
(MOUNTAIN RANGE VIEW)

LIST FOR POSSIBLE TANDEM UNITS:

- 1208 & 1209
- 1224 & 1225

NOTE:
Standard company policy regarding request for tandem shall apply.



LEIA
12TH FLOOR PLAN
SEPTEMBER 2024
PER MEMO REF. DE-24-09-002

KEYPLAN



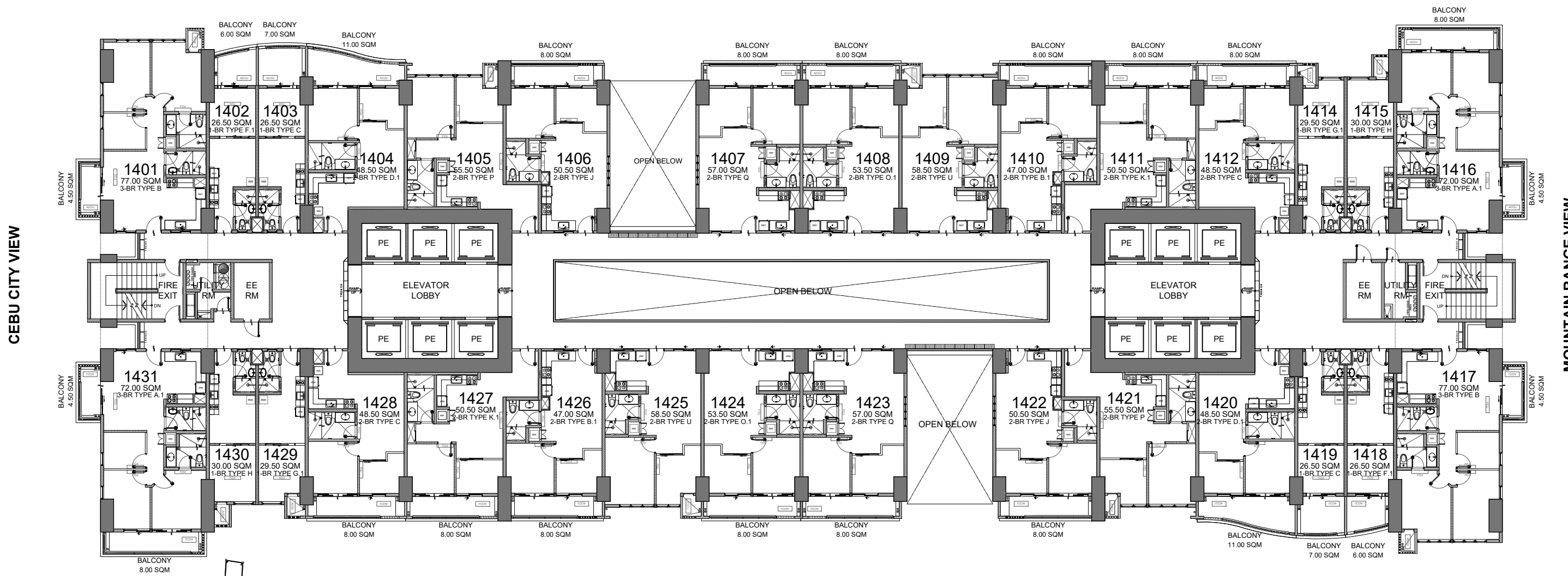
NOTED BY:	ADI	08/09
	PINKY	9 Aug '24
	ANA	8/9

Disclaimer: Floor plans depicted in this material are for demonstration purposes only and should not be relied upon as final project plans. For announcement purposes only.

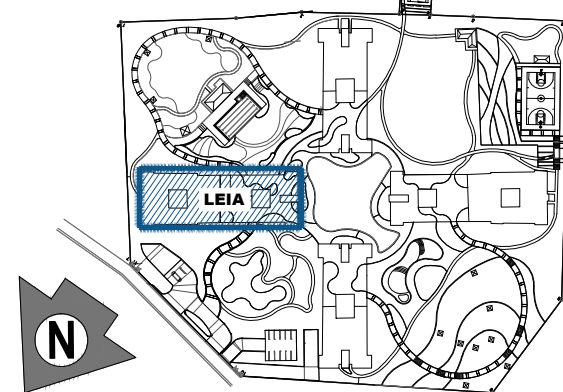


AVAILABILITY PLAN

FACING AMENITIES
(MACTAN CHANNEL VIEW)



FACING AMENITIES
(MOUNTAIN RANGE VIEW)



KEYPLAN

LEIA
14TH FLOOR PLAN
SEPTEMBER 2024
PER MEMO REF. DE-24-09-002

LIST FOR POSSIBLE TANDEM UNITS:

- 1408 & 1409
- 1424 & 1425

NOTE:
Standard company policy regarding request for tandem shall apply.



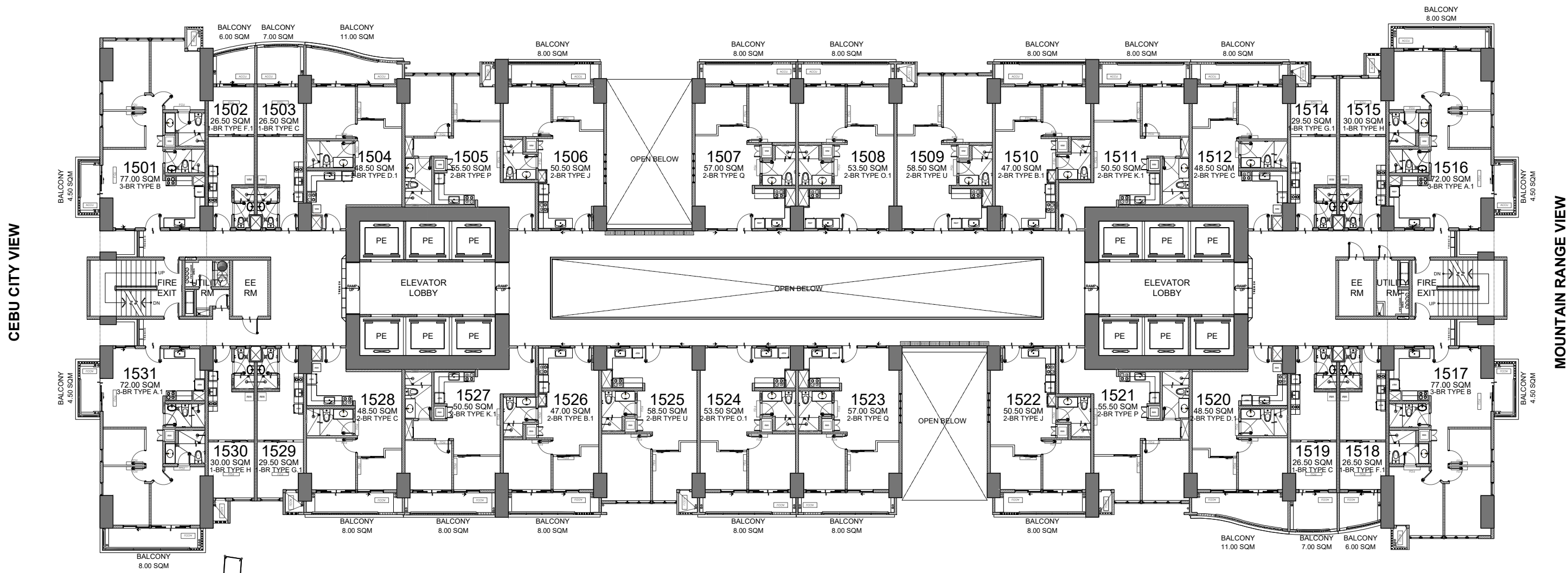
NOTED BY:	ADI	08/09
	PINKY	9Aug'24
	ANA	8/9

Disclaimer: Floor plans depicted in this material are for demonstration purposes only and should not be relied upon as final project plans. For announcement purposes only.



AVAILABILITY PLAN

FACING AMENITIES
(MACTAN CHANNEL VIEW)



CEBU CITY VIEW

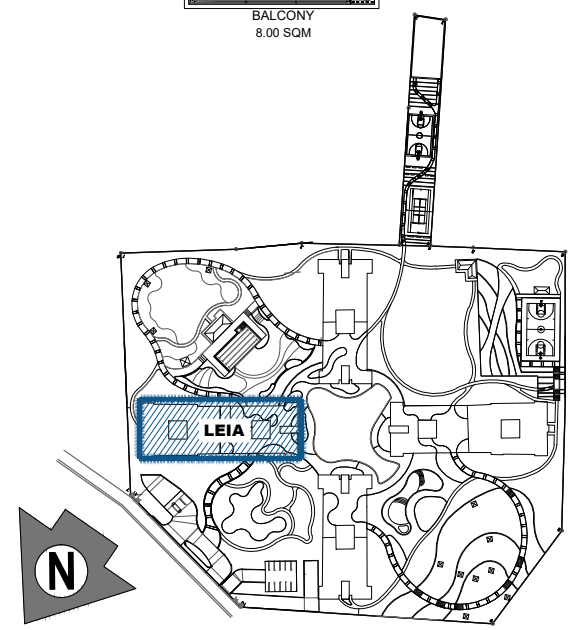
MOUNTAIN RANGE VIEW

FACING AMENITIES
(MOUNTAIN RANGE VIEW)

LIST FOR POSSIBLE TANDEM UNITS:

- 1508 & 1509
- 1524 & 1525

NOTE:
Standard company policy regarding request for tandem shall apply.



KEYPLAN

LEIA
15TH FLOOR PLAN
SEPTEMBER 2024
PER MEMO REF. DE-24-09-002



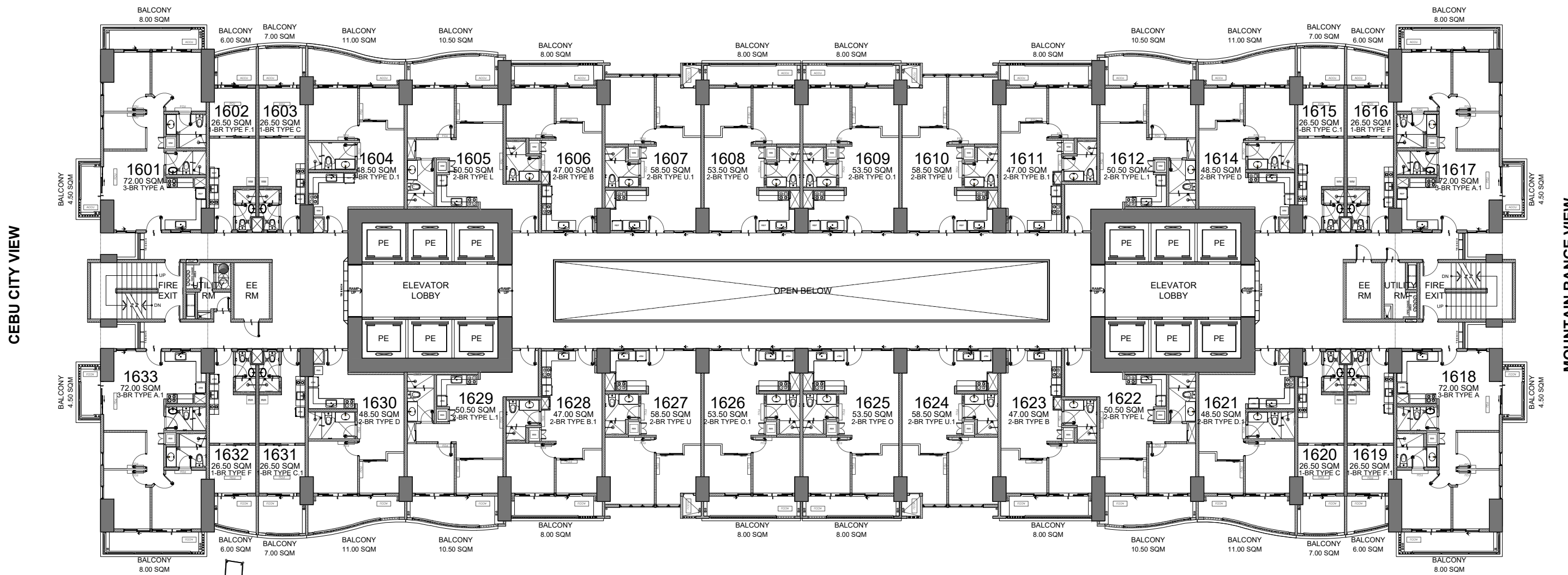
NOTED BY:	ADI	08/09
	PINKY	9 Aug '24
	ANA	8/9

Disclaimer: Floor plans depicted in this material are for demonstration purposes only and should not be relied upon as final project plans. For announcement purposes only.



AVAILABILITY PLAN

FACING AMENITIES
(MACTAN CHANNEL VIEW)

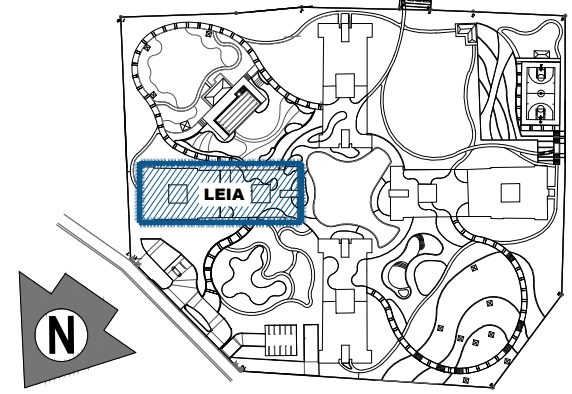


FACING AMENITIES
(MOUNTAIN RANGE VIEW)

LIST FOR POSSIBLE TANDEM UNITS:

- 1607 & 1608
- 1609 & 1610
- 1624 & 1625
- 1626 & 1627

NOTE:
Standard company policy regarding request for tandem shall apply.



KEYPLAN

LEIA
16TH FLOOR PLAN
SEPTEMBER 2024
PER MEMO REF. DE-24-09-002



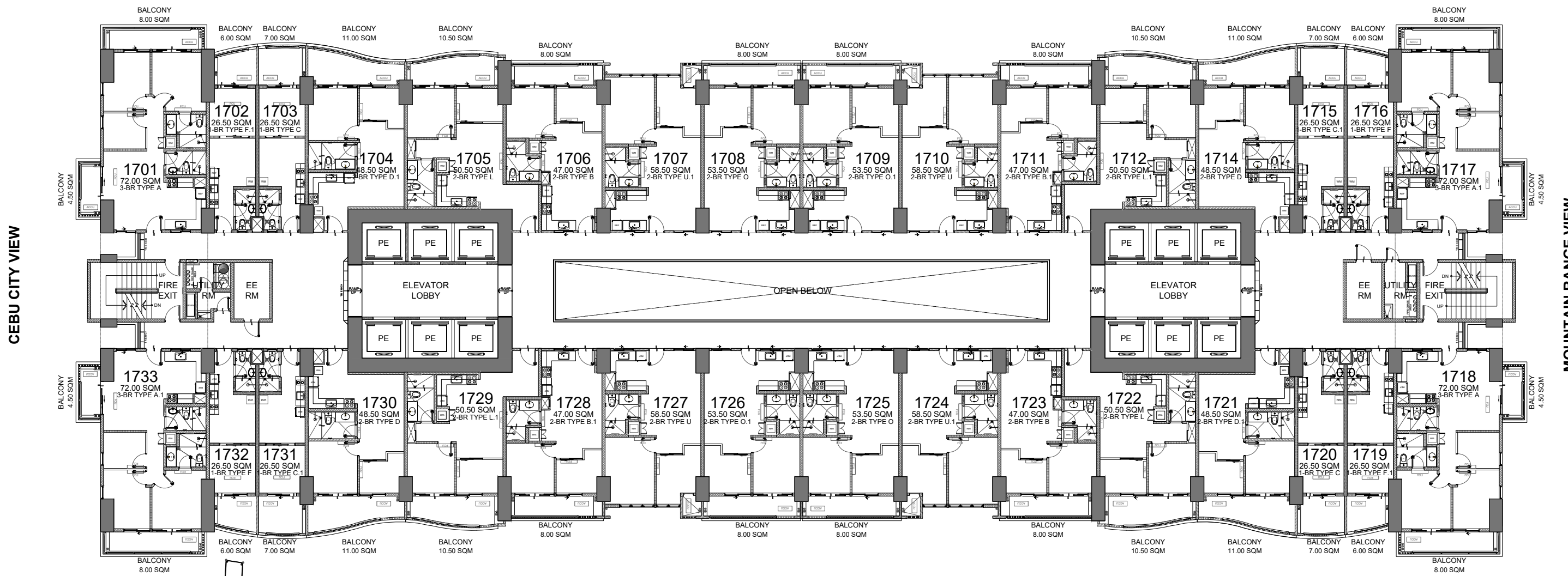
NOTED BY:	ADI	08/09
	PINKY	09 Aug'24
	ANA	8/9

Disclaimer: Floor plans depicted in this material are for demonstration purposes only and should not be relied upon as final project plans. For announcement purposes only.

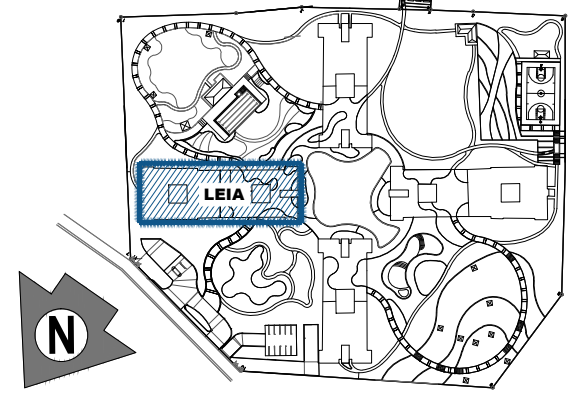


AVAILABILITY PLAN

FACING AMENITIES
(MACTAN CHANNEL VIEW)



FACING AMENITIES
(MOUNTAIN RANGE VIEW)



KEYPLAN

LIST FOR POSSIBLE TANDEM UNITS:

- 1707 & 1708
- 1709 & 1710
- 1724 & 1725
- 1726 & 1727

NOTE:
Standard company policy regarding request for tandem shall apply.

LEIA
17TH FLOOR PLAN
SEPTEMBER 2024
PER MEMO REF. DE-24-09-002



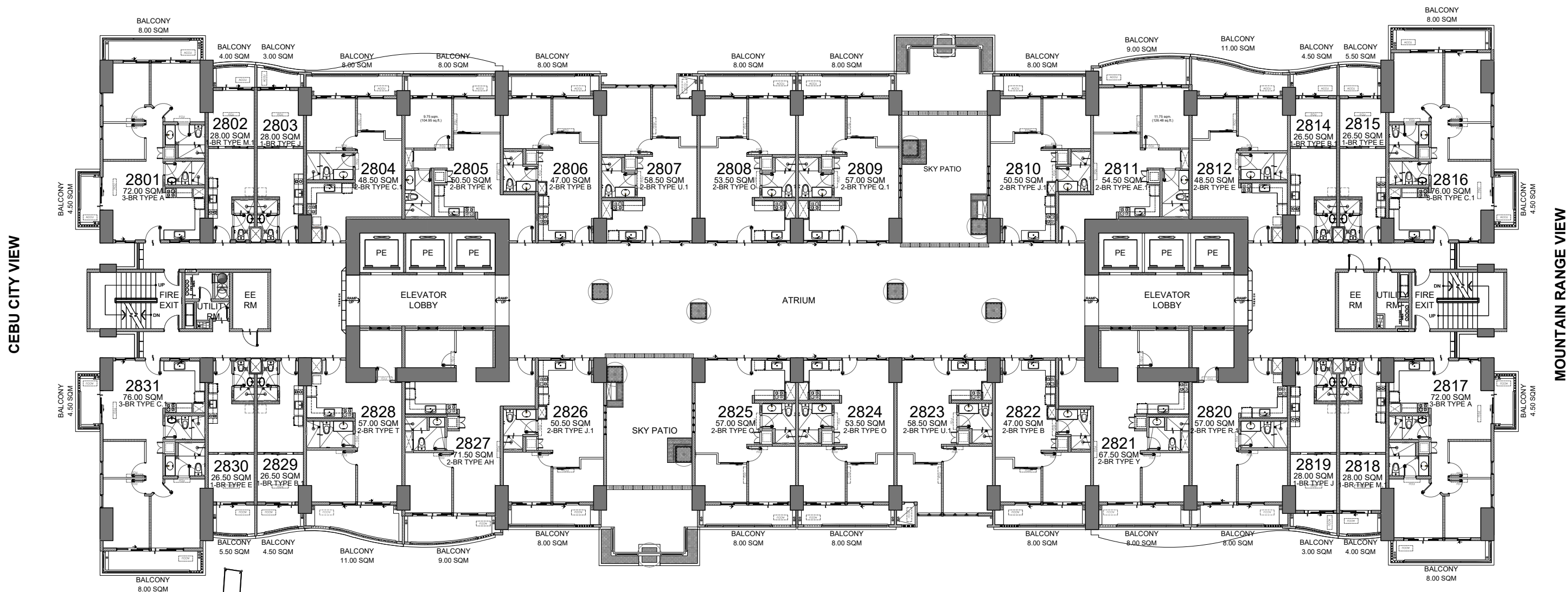
NOTED BY:	ADI	<i>[Signature]</i>	08/09
	PINKY	<i>[Signature]</i>	9Aug'24
	ANA	<i>[Signature]</i>	8/9



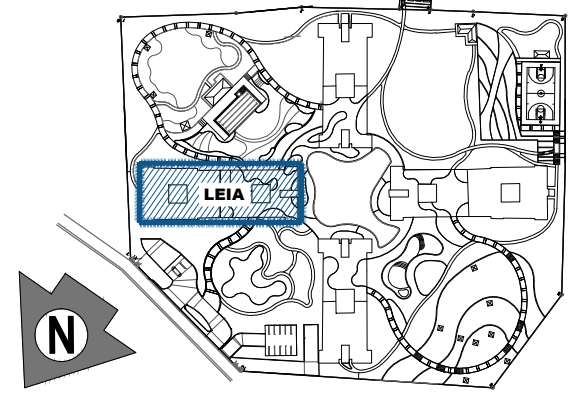
Disclaimer: Floor plans depicted in this material are for demonstration purposes only and should not be relied upon as final project plans. For announcement purposes only.

AVAILABILITY PLAN

FACING AMENITIES
(MACTAN CHANNEL VIEW)



FACING AMENITIES
(MOUNTAIN RANGE VIEW)



KEYPLAN

LIST FOR POSSIBLE TANDEM UNITS:

- 2807 & 2808
- 2823 & 2824

NOTE:
Standard company policy regarding request for tandem shall apply.

LEIA
28TH FLOOR PLAN
SEPTEMBER 2024
PER MEMO REF. DE-24-09-002



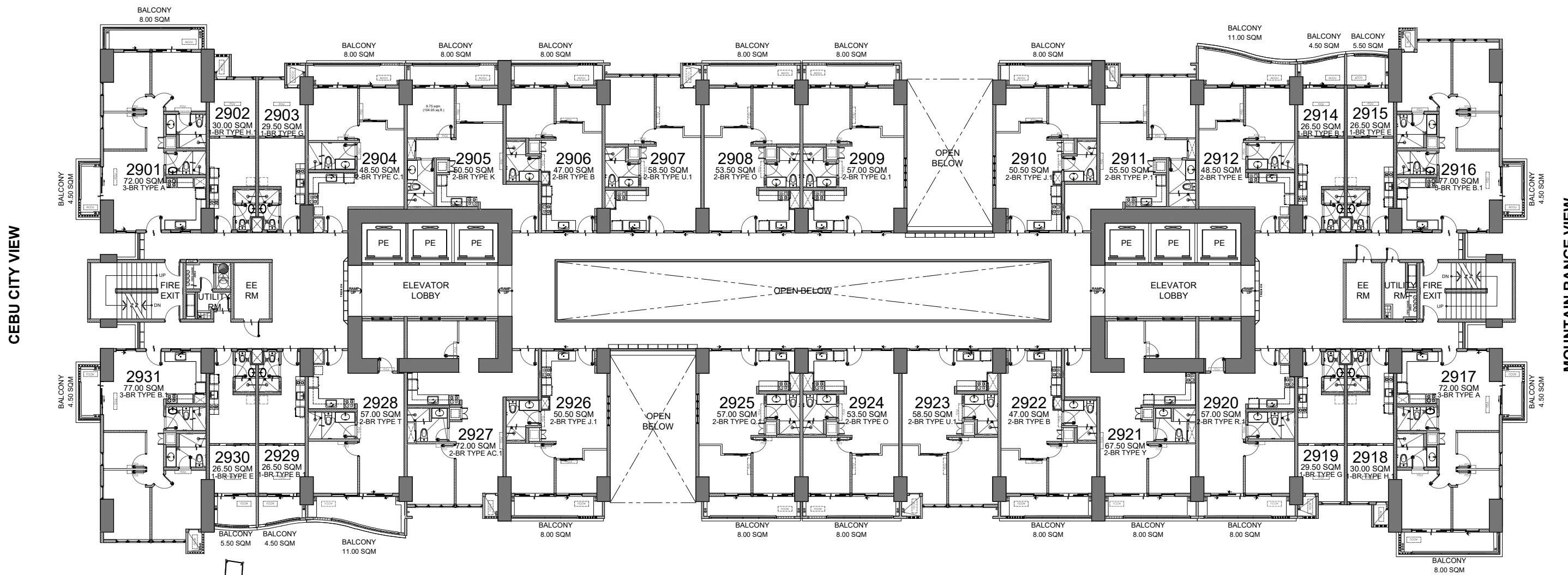
NOTED BY:	ADI	08/09
	PINKY	9Aug'24
	ANA	8/9



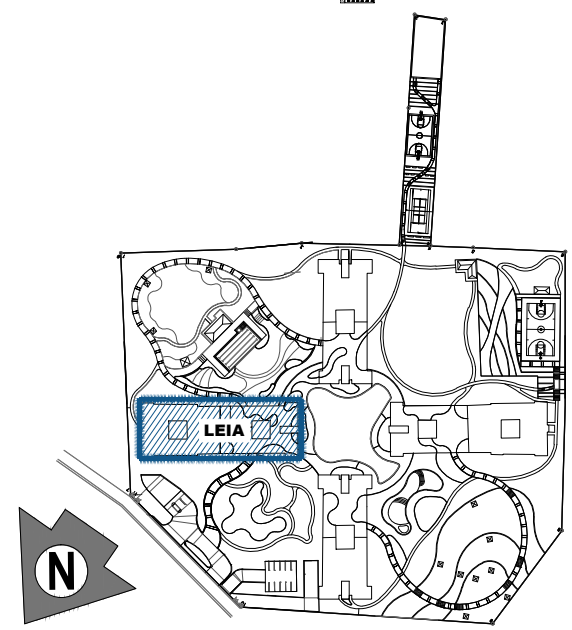
Disclaimer: Floor plans depicted in this material are for demonstration purposes only and should not be relied upon as final project plans. For announcement purposes only.

AVAILABILITY PLAN

FACING AMENITIES
(MACTAN CHANNEL VIEW)



FACING AMENITIES
(MOUNTAIN RANGE VIEW)



KEYPLAN

LEIA
29TH FLOOR PLAN
SEPTEMBER 2024
PER MEMO REF. DE-24-09-002

LIST FOR POSSIBLE TANDEM UNITS:

- 2907 & 2908
- 2923 & 2924

NOTE:

Standard company policy regarding request for tandem shall apply.

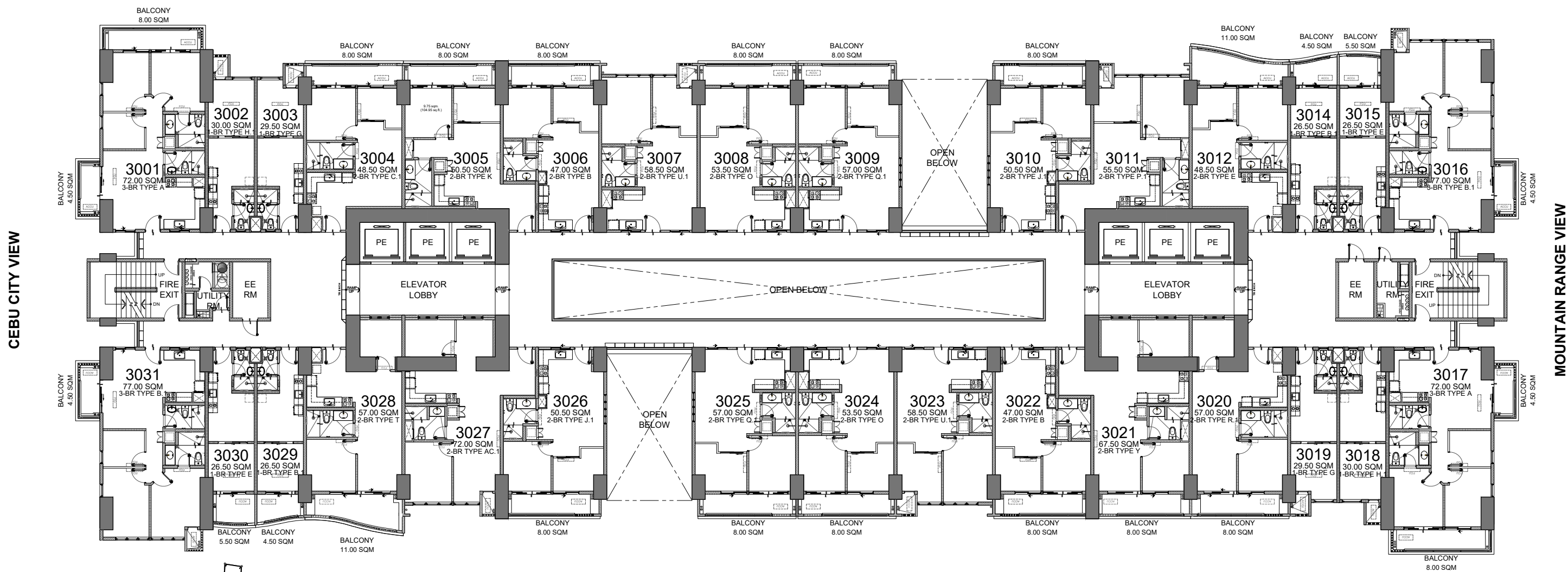


NOTED BY:	ADI	08/09
	PINKY	9Aug'24
	ANA	8/9



Disclaimer: Floor plans depicted in this material are for demonstration purposes only and should not be relied upon as final project plans. For announcement purposes only.

FACING AMENITIES
(MACTAN CHANNEL VIEW)

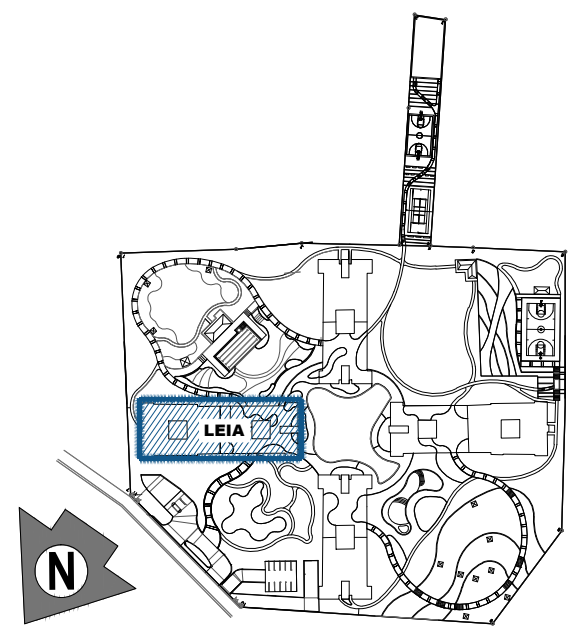


FACING AMENITIES
(MOUNTAIN RANGE VIEW)

LIST FOR POSSIBLE TANDEM UNITS:

- 3007 & 3008
- 3023 & 3024

NOTE:
Standard company policy regarding request for tandem shall apply.



LEIA
30TH FLOOR PLAN
SEPTEMBER 2024
PER MEMO REF. DE-24-09-002



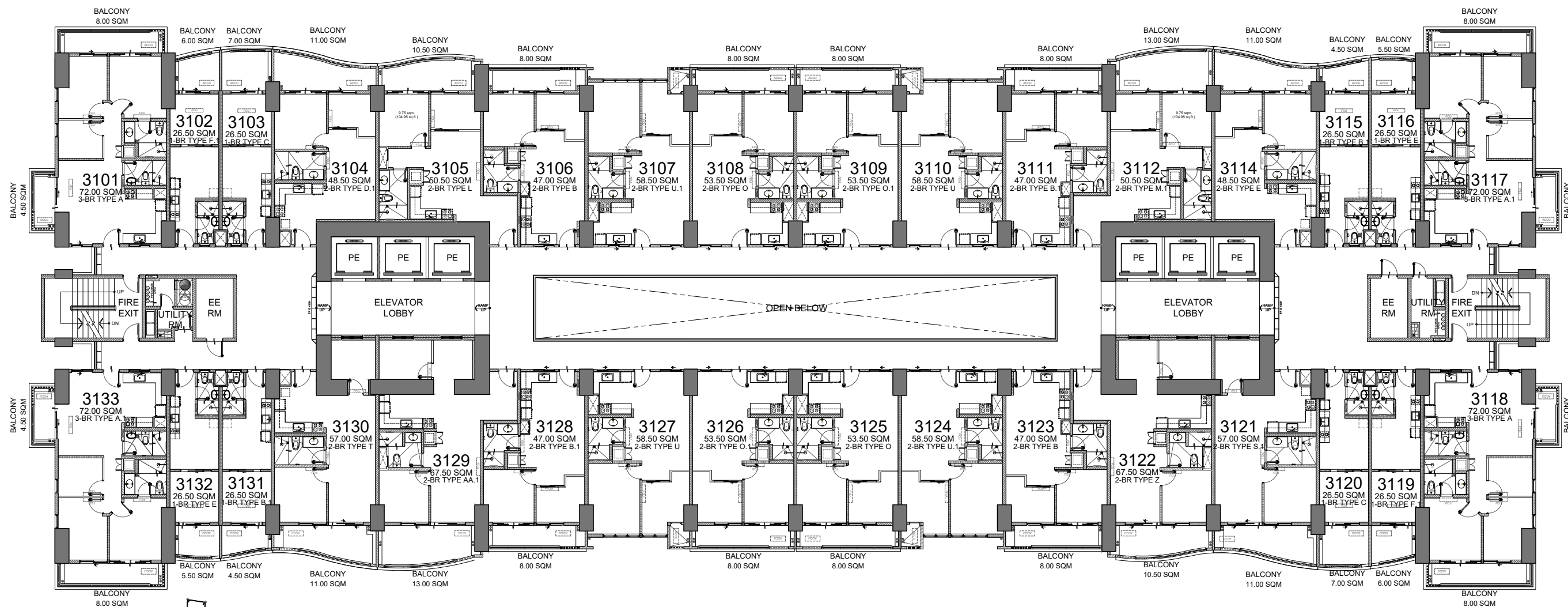
KEYPLAN

DMCI HOMES Feels real good to be home	NOTED BY:	ADI	08/09
		PINKY	19 Aug'24
		ANA	8/9

Disclaimer: Floor plans depicted in this material are for demonstration purposes only and should not be relied upon as final project plans. For announcement purposes only.

AVAILABILITY PLAN

FACING AMENITIES
(MACTAN CHANNEL VIEW)



FACING AMENITIES
(MOUNTAIN RANGE VIEW)

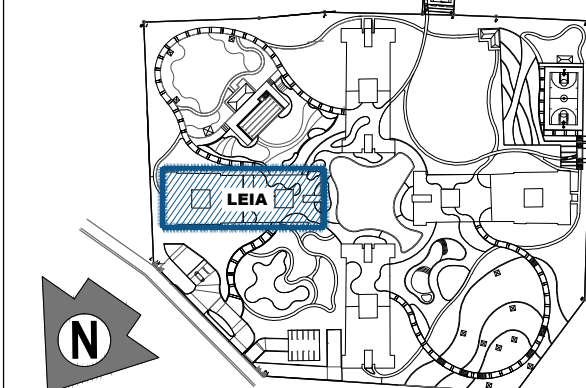
CEBU CITY VIEW

MOUNTAIN RANGE VIEW

LIST FOR POSSIBLE TANDEM UNITS:

- 3107 & 3108
- 3109 & 3110
- 3124 & 3125
- 3126 & 3127

NOTE:
Standard company policy regarding request for tandem shall apply.



KEYPLAN



NOTED BY:	ADI	08/09
	PINKY	9Aug'24
	ANA	8/9

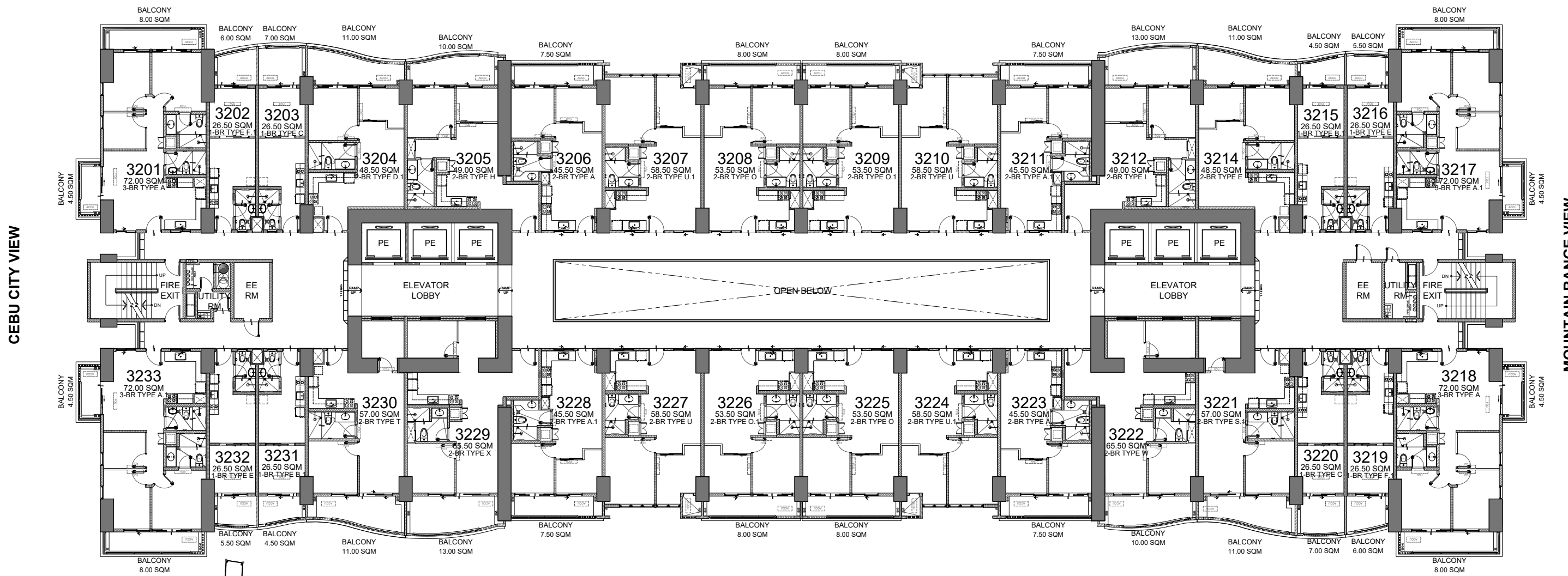
LEIA
31ST FLOOR PLAN
SEPTEMBER 2024
PER MEMO REF. DE-24-09-002



Disclaimer: Floor plans depicted in this material are for demonstration purposes only and should not be relied upon as final project plans. For announcement purposes only.

AVAILABILITY PLAN

FACING AMENITIES
(MACTAN CHANNEL VIEW)

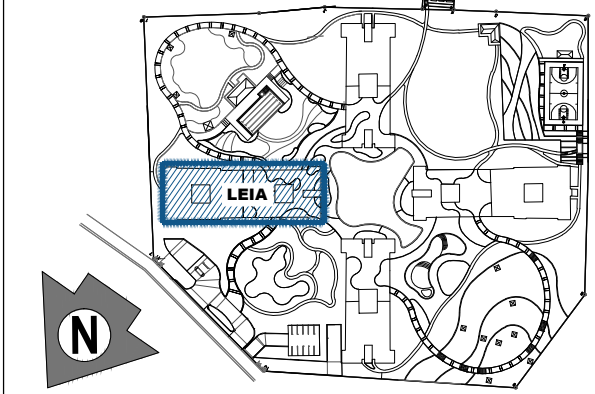


FACING AMENITIES
(MOUNTAIN RANGE VIEW)

LIST FOR POSSIBLE TANDEM UNITS:

- 3207 & 3208
- 3109 & 3210
- 3224 & 3225
- 3226 & 3227

NOTE:
Standard company policy regarding request for tandem shall apply.



KEYPLAN

LEIA
32ND FLOOR PLAN
SEPTEMBER 2024
PER MEMO REF. DE-24-09-002



NOTED BY:	ADI	08/09
	PINKY	049 Aug'24
	ANA	8/9

Disclaimer: Floor plans depicted in this material are for demonstration purposes only and should not be relied upon as final project plans. For announcement purposes only.



AVAILABILITY PLAN